

FUNDERMAX GMBH TEST REPORT

SCOPE OF WORK

SEFA 8PH-2014, 8.1 Analysis of Max Compact Interior Plus White and Black Plaques

REPORT NUMBER

103600635GRR-001d

ISSUE DATE

25-September-2018

PAGES

19

DOCUMENT CONTROL NUMBER

Per GFT-OP-10 (6-March-2018)

© 2018 INTERTEK



TEST REPORT FOR FUNDERMAX GMBH

Report No.: 103600635GRR-001d

Date: 25-September-2018

P.O.: 4500167024

Telephone: +1 616 656 7401

Facsimile: +1 616 656 2022

www.intertek.com

SECTION 1

CLIENT INFORMATION

Attention: Erich Streit

FunderMax GmbH

IZ-NÖ-Süd Straße 3

2355 Wiener Neudorf

Österreich

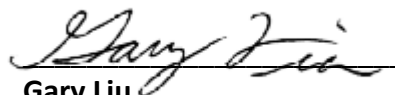
Austria

Phone: +43 (0) 59494 4659

Email: erich.streit@fundermax.biz



Marie Peck
Test Engineer



Gary Liu
Project Reviewer

This report is for the exclusive use of Intertek's Client and is provided pursuant to the agreement between Intertek and its Client. Intertek's responsibility and liability are limited to the terms and conditions of the agreement. Intertek assumes no liability to any party, other than to the Client in accordance with the agreement, for any loss, expense or damage occasioned by the use of this report. Only the Client is authorized to permit copying or distribution of this report and then only in its entirety. Any use of the Intertek name or one of its marks for the sale or advertisement of the tested material, product or service must first be approved in writing by Intertek. The observations and test results in this report are relevant only to the sample tested. This report by itself does not imply that the material, product, or service is or has ever been under an Intertek certification program.

SECTION 2

SUMMARY AND CONCLUSION

Date Received: 28-August-2018
Dates Tested: 12-September-2018 to 20-September-2018

DESCRIPTION OF SAMPLES

Part Description: Max Compact Interior Plus Plaques
Material Submitted: Four (4) Black Plaques & Four (4) White Plaques
Material Specification: SEFA 8PH-2014 Section 8.1
Condition of Samples: Production

WORK REQUESTED/APPLICABLE DOCUMENTS

SEFA 8PH-2014 Section 8.1

Intertek quote Qu-00893211

CONCLUSION

TEST	DISPOSITION
2.1 Chemical Resistance:	
Black Sample	*CONFORMING
White Sample	*CONFORMING

* Suitability for a given application is dependent upon the chemicals used in a given laboratory.

SAMPLE DISPOSITION

After testing completed, samples were rendered unusable and then disposed of.

SECTION 3

2.1 CHEMICAL/STAIN RESISTANCES:

Date Received: 28-August-2018
Dates Tested: 12-September-2018 to 20-September-2018
Location: Intertek

DESCRIPTION OF SAMPLES:

Part Description: Max Compact Interior Plus Plaques
Material Submitted: Four (4) Black Plaques & Four (4) White Plaques
Material Specification: SEFA 8PH-2014 Section 8.1
Condition of Samples: Production

TEST PROCEDURE:

Test Method: Per SEFA 8PH-2014 Section 8.1
The received sample to be tested for chemical resistance as described herein: Place panel on flat surface, clean with soap (Liqui-Nox at 5% concentration) and water and blot dry. Condition the panel for 48-hours at $73\pm 3^{\circ}\text{F}$ ($23\pm 2^{\circ}\text{C}$) and $50 \pm 5\%$ relative humidity. Test the panel for chemical resistance using forty-nine (49) different chemical reagents by the following methods.

Method A: For volatile chemicals – Test volatile chemicals by placing a cotton ball saturated with reagent in the mouth of a 1-oz. (29.574cc) bottle and inverting the bottle on the surface of the panel.

Method B: For non-volatile chemicals – Test non-volatile chemicals by placing five drops of the reagent on the surface of the panel and covering with a 24mm watch glass, convex side down.

For both of the above methods, leave the reagents on the panel for a period of one hour. Wash off the panel with water, clean with detergent and naphtha, and rinse with deionized water. Dry with a towel and evaluate after 24-hours at $73^{\circ} \pm 3^{\circ}\text{F}$ ($23^{\circ} \pm 2^{\circ}\text{C}$) and $50 \pm 5\%$ relative humidity, or the currently accepted guideline set by ASTM using the following rating system.

Rating Scale:

Level 0 - No detectable change.**Level 1 - Slight change in color or gloss.****Level 2 - Slight surface etching or severe staining.****Level 3 - Pitting, cratering, swelling, or erosion of coating. Obvious and significant deterioration.**

Number of Samples:

Two (2) Panel Types

ACCEPTANCE CRITERIA:

Per SEFA 8PH-2014 Section 8.1

Range of results is provided to establish the acceptable range for a Laboratory Grade Finish. Results will vary from manufacturer to manufacturer due to differences in finish formulations. Laboratory grade finishes shall result in no more than four (4) Level 3 conditions. Individual test results, for the specified 49 reagents, will be verified with the established third party, independent SEFA 8 test submittal form. Suitability for a given application is dependent upon the chemicals used in a given laboratory.

RESULTS:**Table 3: Max Compact Interior Plus Black Sample Chemical Spot Test Results**

TEST NO.	CHEMICAL (% BY VOL.)	METHOD	RATING	COMMENTS
1	Acetate, Amyl	A	0	
2	Acetate, Ethyl	A	0	
3	Acetic Acid, 98%	B	0	
4	Acetone	A	0	
5	Acid Dichromate, 5%	B	0	
6	Alcohol, Butyl	A	0	
7	Alcohol, Ethyl	A	0	
8	Alcohol, Methyl	A	0	
9	Ammonium Hydroxide, 28%	B	0	
10	Benzene	A	0	
11	Carbon Tetrachloride	A	0	
12	Chloroform	A	0	
13	Chromic Acid, 60%	B	0	
14	Cresol	A	0	
15	Dichloroacetic Acid	A	0	
16	Dimethylformamide	A	0	
17	Dioxane	A	0	
18	Ethyl Ether	A	0	
19	Formaldehyde, 37%	A	0	
20	Formic Acid, 90%	B	0	
21	Furfural	A	1	Slight gloss change

TEST REPORT FOR FUNDERMAX GMBH

Date: 25-September-2018

Report No.: 103600635GRR-001d

P.O.: 4500167024

TEST NO.	CHEMICAL (% BY VOL.)	METHOD	RATING	COMMENTS
22	Gasoline	A	0	
23	Hydrochloric Acid, 37%	B	1	Slight gloss change
24	Hydrofluoric Acid, 48%	B	2	Gloss change
25	Hydrogen Peroxide, 30%	B	0	
26	Iodine, Tincture of	B	0	
27	Methyl Ethyl Ketone	A	0	
28	Methylene Chloride	A	0	
29	Monochlorobenzene	A	0	
30	Naphthalene	A	0	
31	Nitric Acid, 20%	B	1	Slight gloss change
32	Nitric Acid, 30%	B	1	Slight gloss change
33	Nitric Acid, 70%	B	2	Gloss change
34	Phenol, 90%	A	0	
35	Phosphoric Acid, 85%	B	0	
36	Silver Nitrate, Saturated	B	1	Slight gloss change
37	Sodium Hydroxide, 10%	B	0	
38	Sodium Hydroxide, 20%	B	0	
39	Sodium Hydroxide, 40%	B	0	
40	Sodium Hydroxide, Flake	B	0	
41	Sodium Sulfide, Saturated	B	0	
42	Sulfuric Acid, 33%	B	0	
43	Sulfuric Acid 77%	B	0	
44	Sulfuric Acid, 96%	B	2	Gloss change
45	Sulfuric Acid, (77%) and Nitric Acid (70%), equal parts	B	2	Gloss change
46	Toluene	A	0	
47	Trichloroethylene	A	0	
48	Xylene	A	0	
49	Zinc Chloride, Saturated	B	0	

Table 4: Max Compact Interior Plus Black Sample Summary Results Table:

TOTALS			
ITEMS	REQUIREMENT	NO. REAGENT WITH 3 RATINGS	DISPOSITION
Volatile Subtotal:	-	0	---
Non-volatile Subtotal:	-	0	---
Grand Totals:	No More than Four Level 3 Conditions	0	*Conforming

* Suitability for a given application is dependent upon the chemicals used in a given laboratory.

Table 5: Max Compact Interior Plus White Sample Chemical Spot Test Results

TEST NO.	CHEMICAL (% BY VOL.)	METHOD	RATING	COMMENTS
1	Acetate, Amyl	A	0	
2	Acetate, Ethyl	A	0	
3	Acetic Acid, 98%	B	0	
4	Acetone	A	0	
5	Acid Dichromate, 5%	B	0	
6	Alcohol, Butyl	A	0	
7	Alcohol, Ethyl	A	0	
8	Alcohol, Methyl	A	0	
9	Ammonium Hydroxide, 28%	B	0	
10	Benzene	A	0	
11	Carbon Tetrachloride	A	0	
12	Chloroform	A	1	Slight gloss change
13	Chromic Acid, 60%	B	0	
14	Cresol	A	0	
15	Dichloroacetic Acid	A	0	
16	Dimethylformamide	A	0	
17	Dioxane	A	0	
18	Ethyl Ether	A	0	
19	Formaldehyde, 37%	A	0	
20	Formic Acid, 90%	B	0	
21	Furfural	A	2	Staining
22	Gasoline	A	0	
23	Hydrochloric Acid, 37%	B	0	
24	Hydrofluoric Acid, 48%	B	2	Gloss change
25	Hydrogen Peroxide, 30%	B	0	
26	Iodine, Tincture of	B	1	Slight staining
27	Methyl Ethyl Ketone	A	0	
28	Methylene Chloride	A	0	
29	Monochlorobenzene	A	0	
30	Naphthalene	A	0	
31	Nitric Acid, 20%	B	1	Slight gloss change
32	Nitric Acid, 30%	B	1	Slight gloss change
33	Nitric Acid, 70%	B	2	Gloss change
34	Phenol, 90%	A	0	
35	Phosphoric Acid, 85%	B	0	
36	Silver Nitrate, Saturated	B	2	Staining, color change
37	Sodium Hydroxide, 10%	B	0	

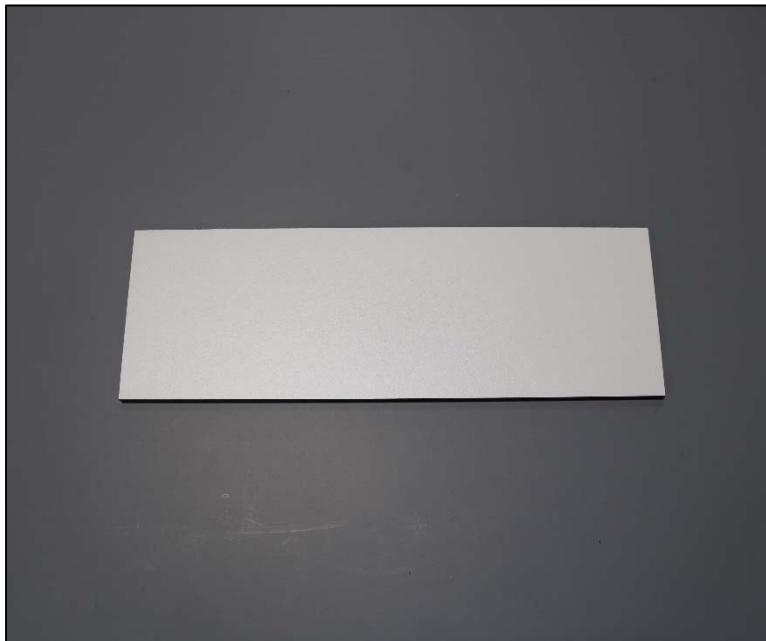
TEST NO.	CHEMICAL (% BY VOL.)	METHOD	RATING	COMMENTS
38	Sodium Hydroxide, 20%	B	0	
39	Sodium Hydroxide, 40%	B	0	
40	Sodium Hydroxide, Flake	B	0	
41	Sodium Sulfide, Saturated	B	0	
42	Sulfuric Acid, 33%	B	1	Slight gloss change
43	Sulfuric Acid 77%	B	2	Gloss change
44	Sulfuric Acid, 96%	B	2	Gloss change, Slight gloss change
45	Sulfuric Acid, (77%) and Nitric Acid (70%), equal parts	B	2	Gloss change
46	Toluene	A	0	
47	Trichloroethylene	A	0	
48	Xylene	A	0	
49	Zinc Chloride, Saturated	B	0	

Table 6: Max Compact Interior Plus White Sample Summary Results Table:

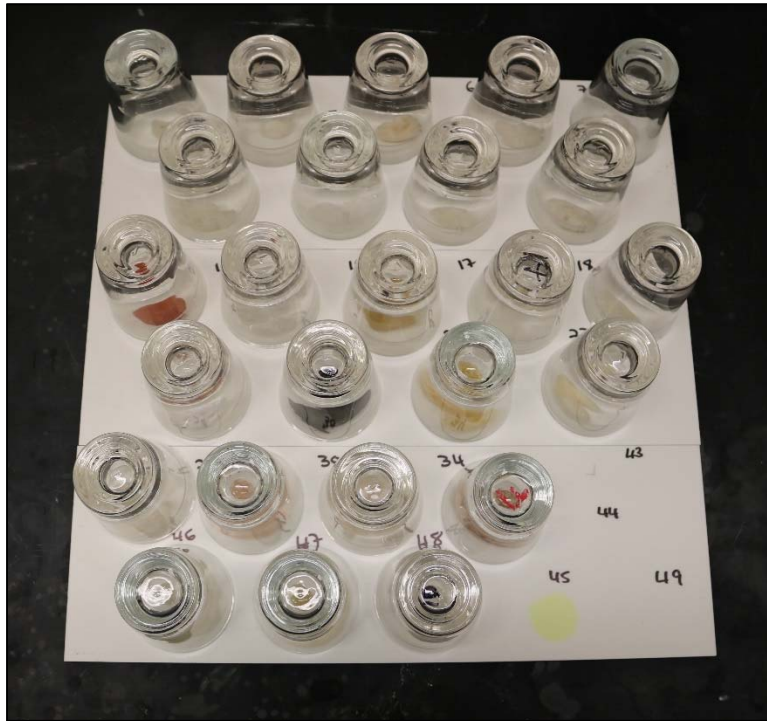
TOTALS			
ITEMS	REQUIREMENT	NO. REAGENT WITH 3 RATINGS	DISPOSITION
Volatile Subtotal:	-	0	---
Non-volatile Subtotal:	-	0	---
Grand Totals:	No More than Four Level 3 Conditions	0	*Conforming

* Suitability for a given application is dependent upon the chemicals used in a given laboratory.

PHOTOGRAPHS:



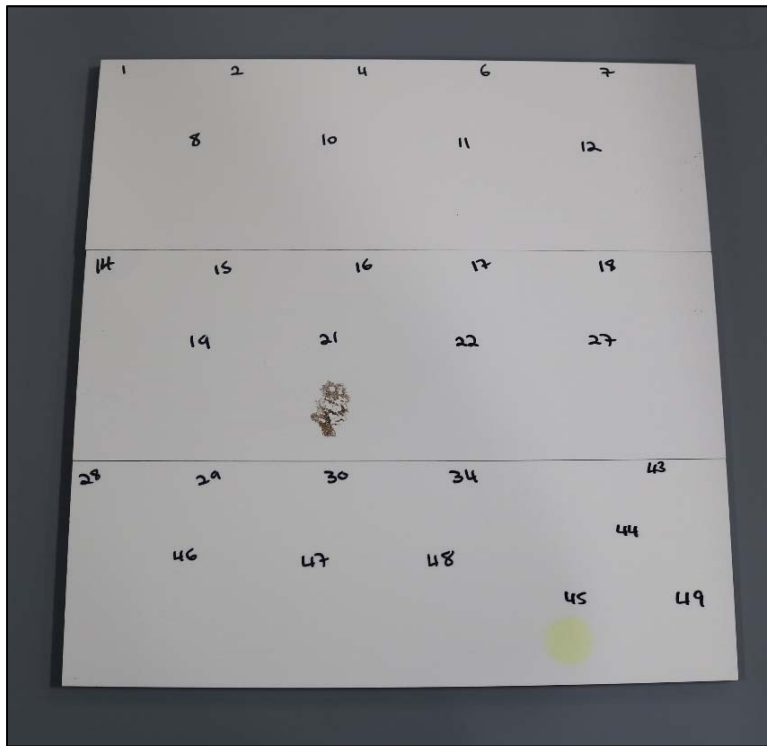
Chemical Spot Test "As Received" Test Panels



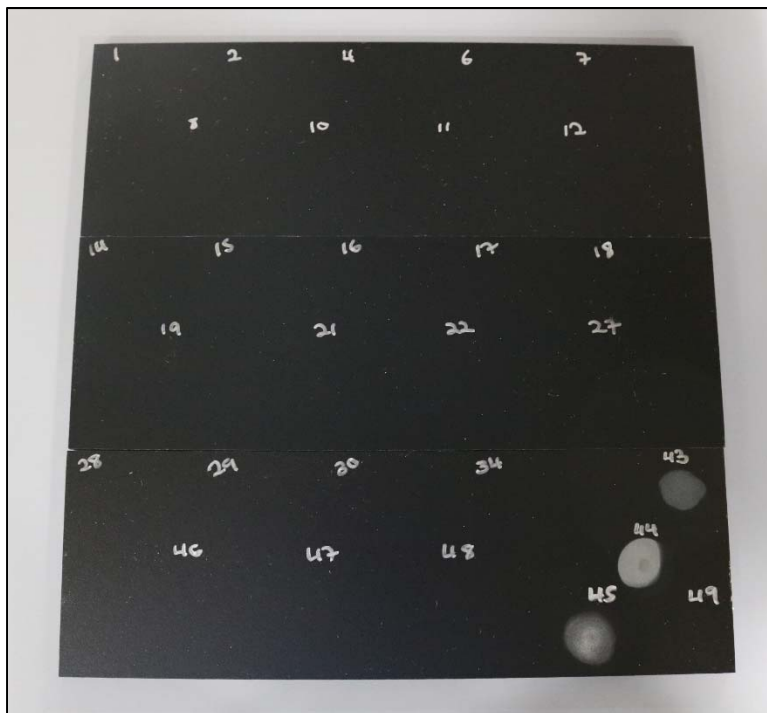
Representative Chemical Spot Test Volatile Chemical Set-up



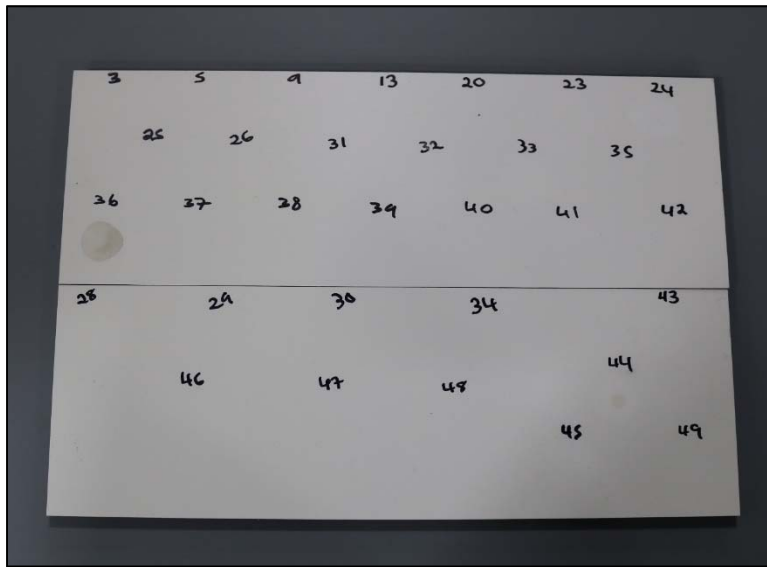
Representative Chemical Spot Test Non-volatile Chemical Set-up



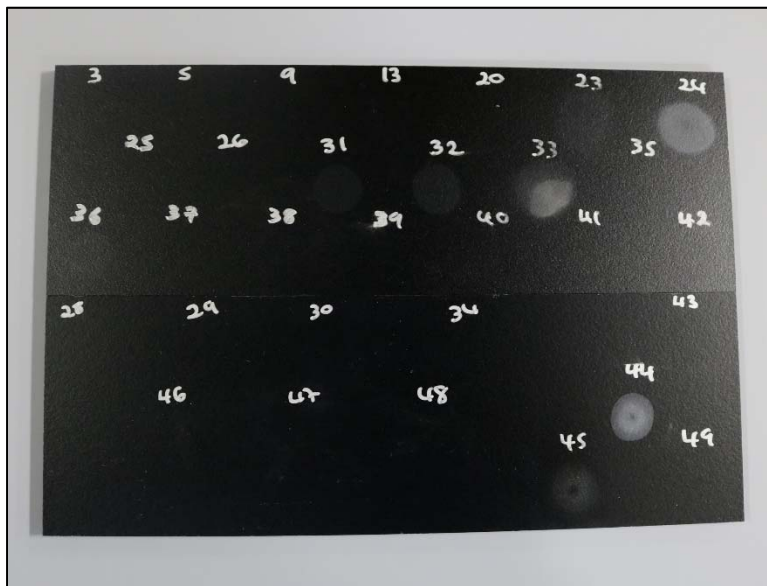
Chemical Spot Test Volatile after Exposure, White Sample



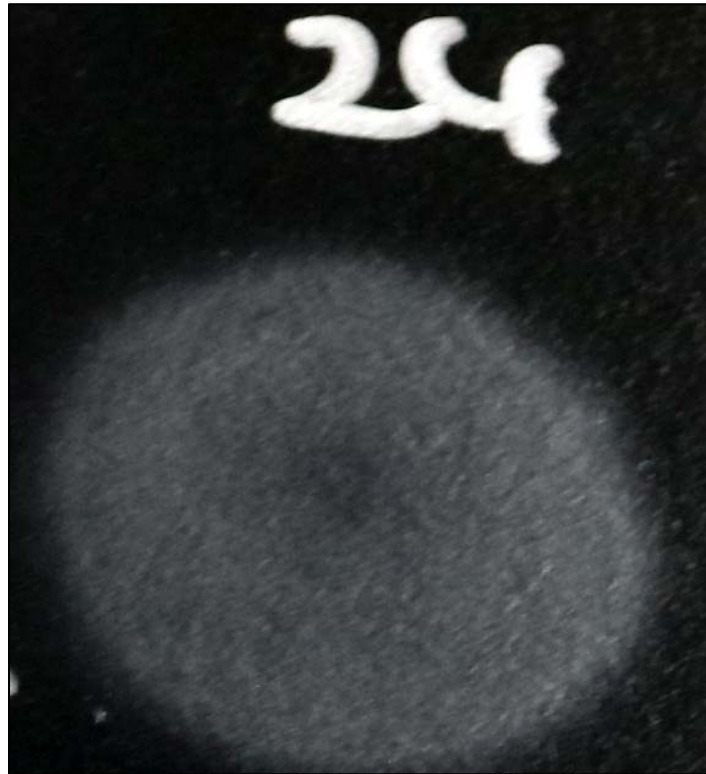
Chemical Spot Test Volatile after Exposure, Black Sample



Chemical Spot Test Non-volatile after Exposure, White Sample



Chemical Spot Test Non-volatile after Exposure, Black Sample



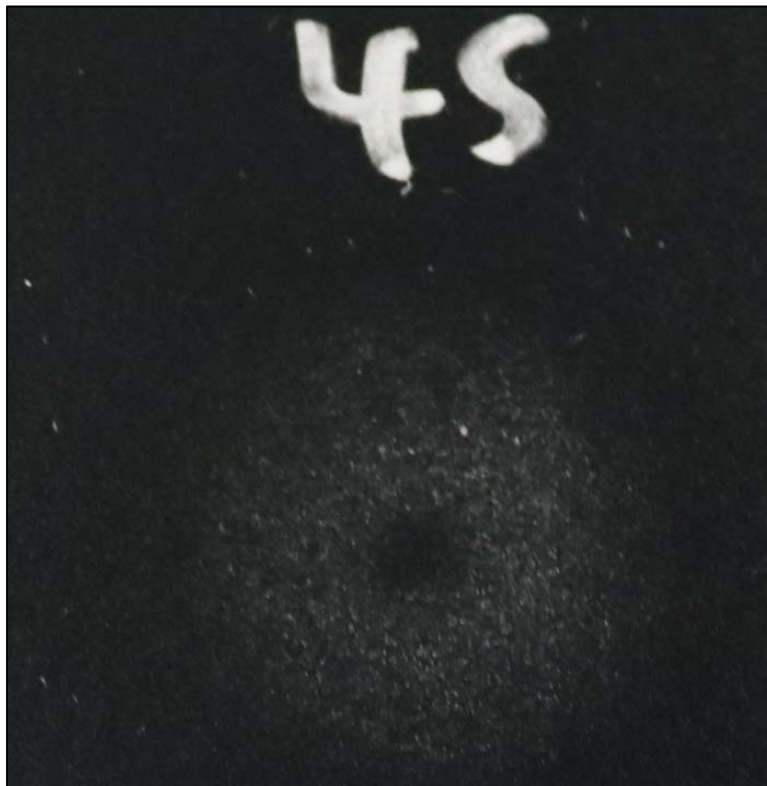
Chemical spot test #24, Hydrofluoric Acid (48%), Rating 2, Gloss change



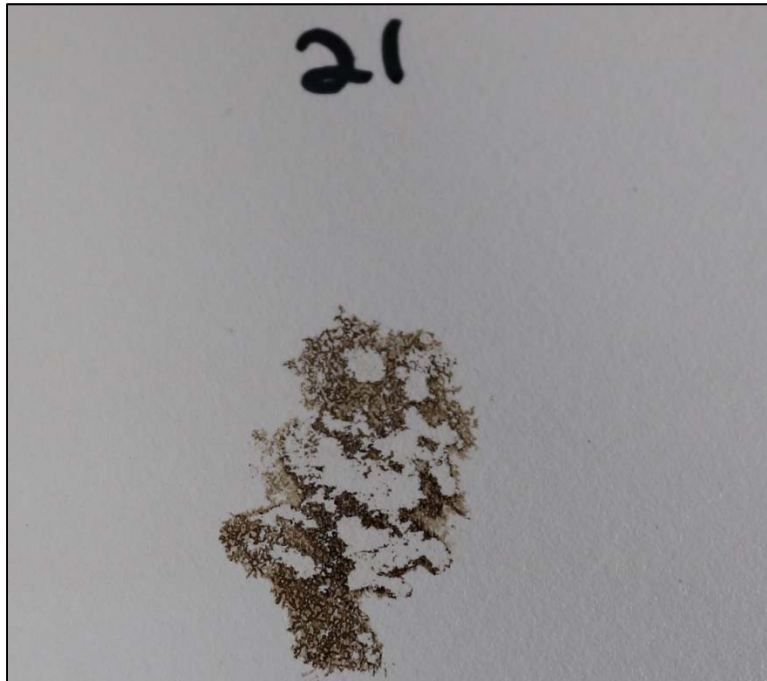
Chemical spot test #33, Nitric Acid (70%), Rating 2, Gloss change



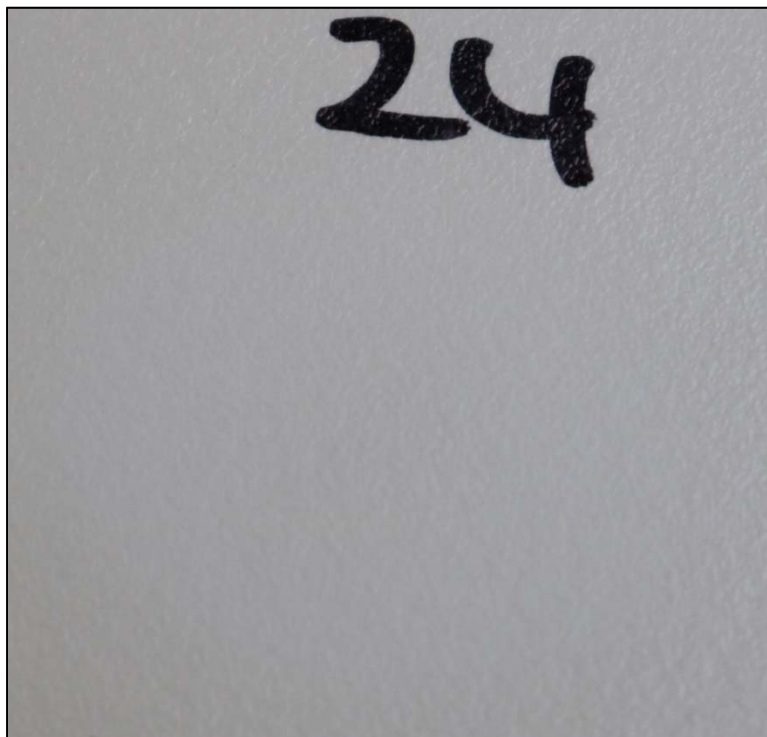
Chemical spot test #44, Sulfuric Acid (96%), Rating 2, Gloss change



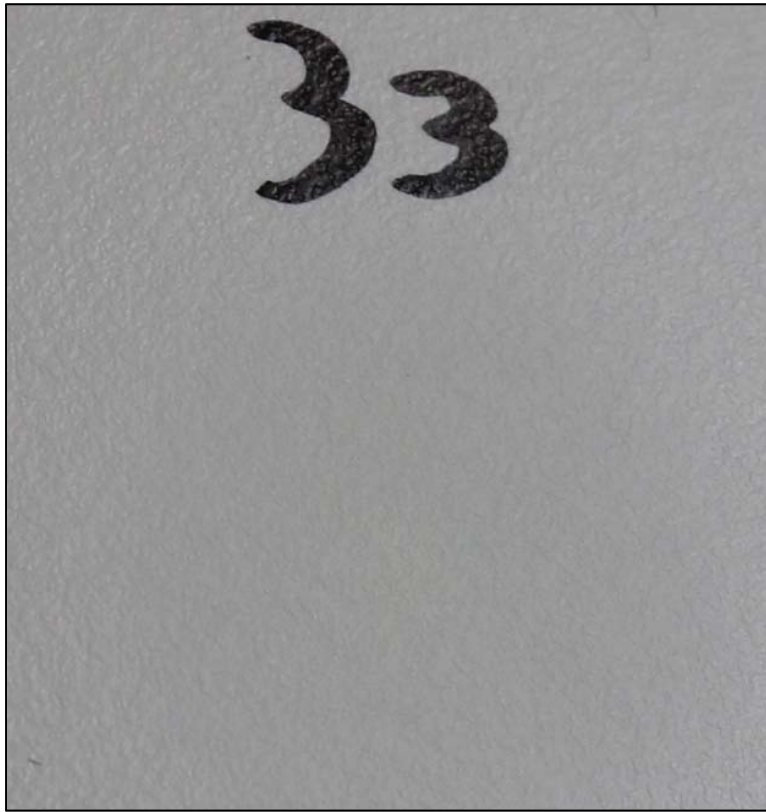
Chemical spot test #45, Sulfuric Acid (77%) and Nitric Acid (70%), equal parts, Rating 2, Gloss change



Chemical spot test #21, Furfural, Rating 2, Staining



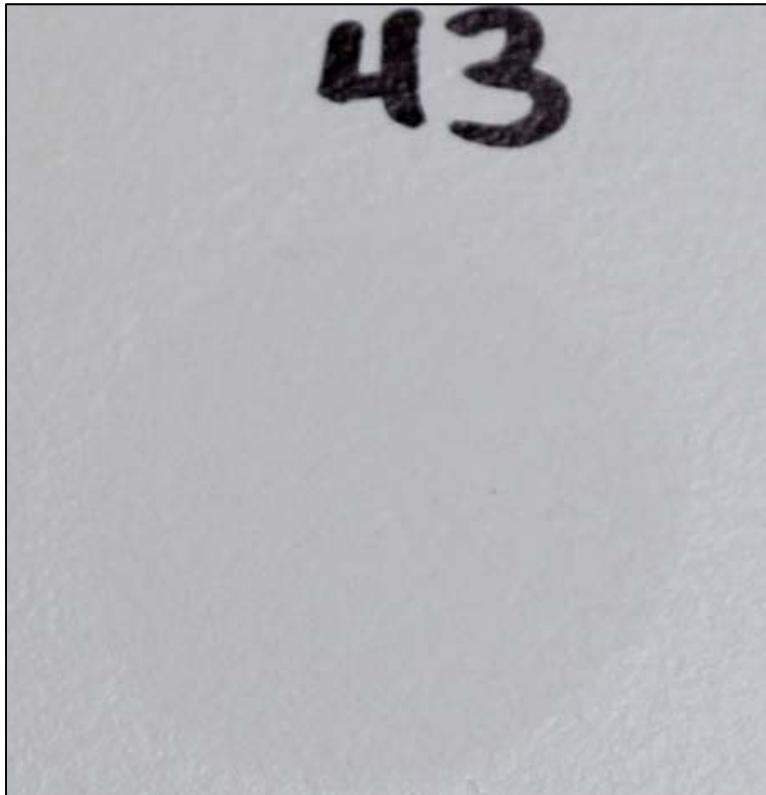
Chemical spot test #24, Hydrofluoric Acid (48%), Rating 2, Gloss change



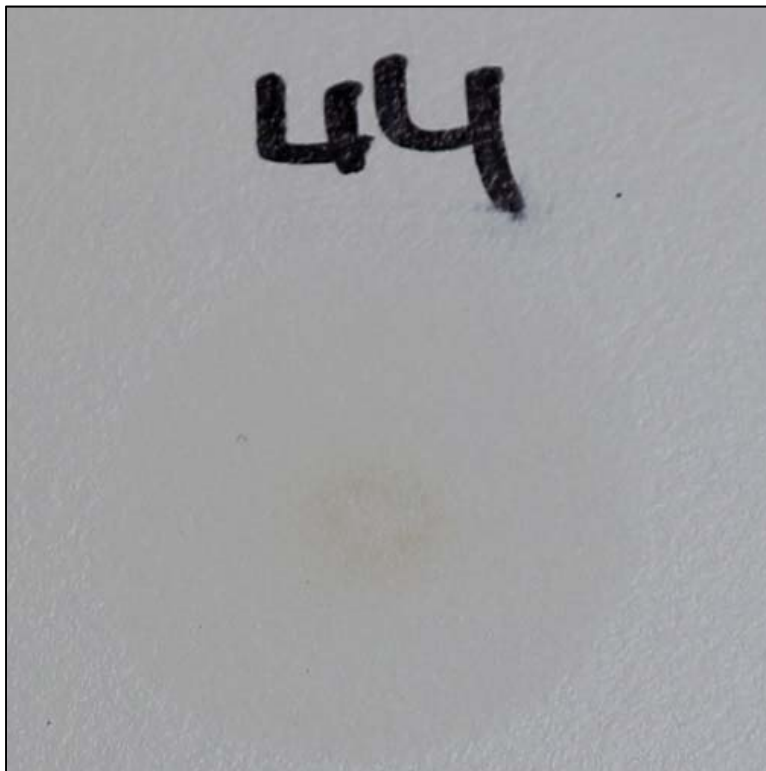
Chemical spot test #33, Nitric Acid (70%), Rating 2, Gloss change



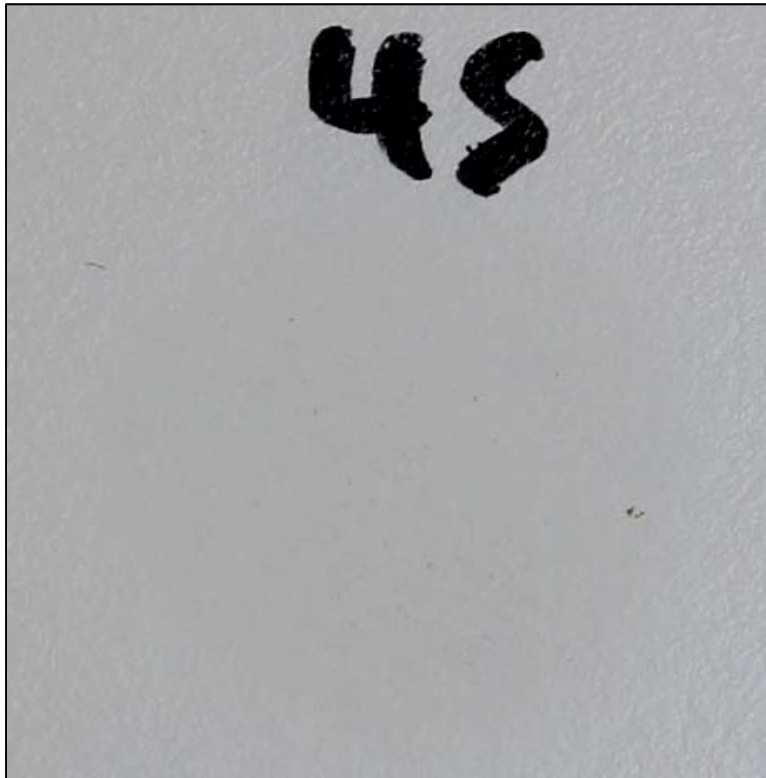
Chemical spot test #36, Silver Nitrate, Saturated, Rating 2, Staining, color change



Chemical spot test #43, Sulfuric Acid (77%), Rating 2, Gloss change



Chemical spot test #44, Sulfuric Acid (96%), Rating 2, Gloss change, slight color change



**Chemical spot test #45, Sulfuric Acid (77%) and Nitric Acid (70%), equal parts, Rating 2,
Gloss change**